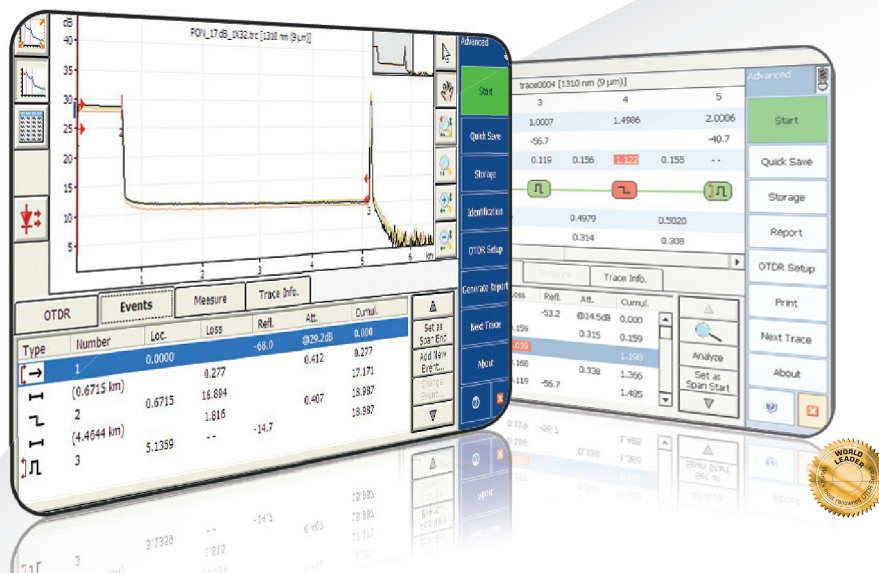


FTB-7300E—PON FTTx/MDU OTDR

OPTIMIZED FOR ACCESS FIBER DEPLOYMENTS
AND TROUBLESHOOTING



Perfect for fiber installers to seamlessly characterize splitters in PON FTTx and MDU applications

KEY FEATURES

- Test through high-port-count splitters (up to 1x128)
- Singlemode port for in-service troubleshooting
- Dynamic range of up to 39 dB
- Short acquisition time to speed up deployment process

APPLICATIONS

- FTTx/MDU test challenges within PON networks
- Access network testing

PLATFORM COMPATIBILITY

For FTB-7300E:



FTB-200
Two-slot modular platform
for combined applications

FTB-500
Four- or eight-slot platform
for fiber characterization



Assessing
Next-Gen Networks

ORDERING INFORMATION

SINGLEMODE (PON FTTx/MDU) FOR FTB-200 COMPACT PLATFORM OR FTB-500 PLATFORM

FTB-7300E-XX-XX-XX-XX

Model

Dual Wavelength

FTB-7300E-023B = SM OTDR module, 1310/1550 nm (9/125 µm)
 FTB-7300E-034B = SM OTDR module, 1550/1625 nm (9/125 µm)

Triple Wavelength

FTB-7300E-234B = SM OTDR module, 1310/1550/1625 nm (9/125 µm)
 FTB-7300E-236B = SM OTDR module, 1310/1490/1550 nm (9/125 µm)

SM Live Port

FTB-7300E-023B-04B = SM and SM live OTDR module, 1310/1550
 and 1625 nm live port
 FTB-7300E-023B-08B = SM and SM live OTDR module, 1310/1550
 and 1650 nm live port
 FTB-7300E-000-04B = SM live OTDR with 1625 nm live port (9/125 µm)

Visual Fault Locator

00 = Without visual fault
 locator
 VFL = With visual fault
 locator (universal
 2.5 mm connector)

Software Option

00 = Without software option
 AD = Macrobend finder
 and linear view ^a

Connector

EA-EUI-28 = APC/DIN 47256
 EA-EUI-89 = APC/FC narrow key
 EA-EUI-91 = APC/SC
 EA-EUI-95 = APC/E-2000

EI: See note below

Example: FTB-7300E-023B-04B-EA-EUI-89-VFL

Note

a. This software option is compatible only on FTB-200 platform.

EI Connectors

To maximize the performance of your OTDR, EXFO recommends using APC connectors. These connectors generate lower reflectance, which is a critical parameter that affects performance, particularly dead zones. APC connectors provide better performances than UPC connectors, thereby improving testing efficiency.

Note

UPC connectors are also available, simply replace EA-XX by EI-XX in the ordering part number. Additional connectors available are the EI-EUI-76 (UPC/HMS-10/AG) and EI-EUI-91 (UPC/ST).

EXFO Corporate Headquarters > 400 Godin Avenue, Quebec City (Quebec) G1M 2K2 CANADA | Tel.: +1 418 683-0211 | Fax: +1 418 683-2170 | info@EXFO.com

Toll-free: +1 800 663-3936 (USA and Canada) | www.EXFO.com

EXFO America	3701 Plano Parkway, Suite 160	Plano, TX 75075 USA	Tel.: +1 800 663-3936	Fax: +1 972 836-0164
EXFO Asia	100 Beach Road, #22-01/03 Shaw Tower	SINGAPORE 189702	Tel.: +65 6333 8241	Fax: +65 6333 8242
EXFO China	36 North, 3 rd Ring Road East, Dongcheng District Room 1207, Tower C, Global Trade Center	Beijing 100013 P. R. CHINA	Tel.: + 86 10 5825 7755	Fax: +86 10 5825 7722
EXFO Europe	Omega Enterprise Park, Electron Way	Chandlers Ford, Hampshire S053 4SE ENGLAND	Tel.: +44 2380 246810	Fax: +44 2380 246801
EXFO NetHawk	Elektronikkatie 2	FI-90590 Oulu, FINLAND	Tel.: +358 (0)403 010 300	Fax: +358 (0)8 564 5203
EXFO Service Assurance	270 Billerica Road	Chelmsford, MA 01824 USA	Tel.: +1 978 367-5600	Fax: +1 978 367-5700

EXFO is certified ISO 9001 and attests to the quality of these products. This device complies with Part 15 of the FCC Rules. Operation is subject to the following two conditions: (1) this device may not cause harmful interference, and (2) this device must accept any interference received, including interference that may cause undesired operation. EXFO has made every effort to ensure that the information contained in this specification sheet is accurate. However, we accept no responsibility for any errors or omissions, and we reserve the right to modify design, characteristics and products at any time without obligation. Units of measurement in this document conform to SI standards and practices. In addition, all of EXFO's manufactured products are compliant with the European Union's WEEE directive. For more information, please visit www.EXFO.com/recycle. Contact EXFO for prices and availability or to obtain the phone number of your local EXFO distributor.

For the most recent version of this spec sheet, please go to the EXFO website at www.EXFO.com/specs.

In case of discrepancy, the Web version takes precedence over any printed literature.